



Date: Friday, 31 July 2015

Time: 9.00 am

Venue: Shrewsbury Room, Shirehall, Abbey Foregate, Shrewsbury, Shropshire,
SY2 6ND

Contact: Karen Nixon, Committee Officer
Tel: 01743 257720
Email: karen.nixon@shropshire.gov.uk

HEALTH AND WELLBEING BOARD

TO FOLLOW REPORT (S)

9 Healthy Child Programme Health Visiting Report (Pages 1 - 10)

A presentation will be made.

Contact: Lindsay MacHardy

This page is intentionally left blank

The Healthy Child Programme: commissioning

Lindsay MacHardy,
Public Health Lead
Children & Young People Team

The 'Healthy Child Programme': Commissioning for Public Health Outcomes

Lindsay MacHardy: Public Health Lead: Children & Young People Team

Anne-Marie Speke: Healthy Child Programme Co-ordinator

Val Cross: Early Years & Teenagers

Alice Cruttwell: Schools' Public Health Advisor

Renee Lee: Targeting Mental Health Support (TaMHS) Development Officer

Naomi O'Hanlon: Targeting Mental Health Support (TaMHS) Development Officer

Ellie Welch: Administrator

Richard James: Graduate Trainee – TaMHS evaluation project

Team structure under review due to recent vacancy of senior post.

The Healthy Child Programme

The 'Healthy Child Programme' (HCP) is the main universal health service for improving the health and wellbeing of children from birth to 19 through:

- health and development reviews
- health promotion
- parenting support
- screening and immunisation programmes

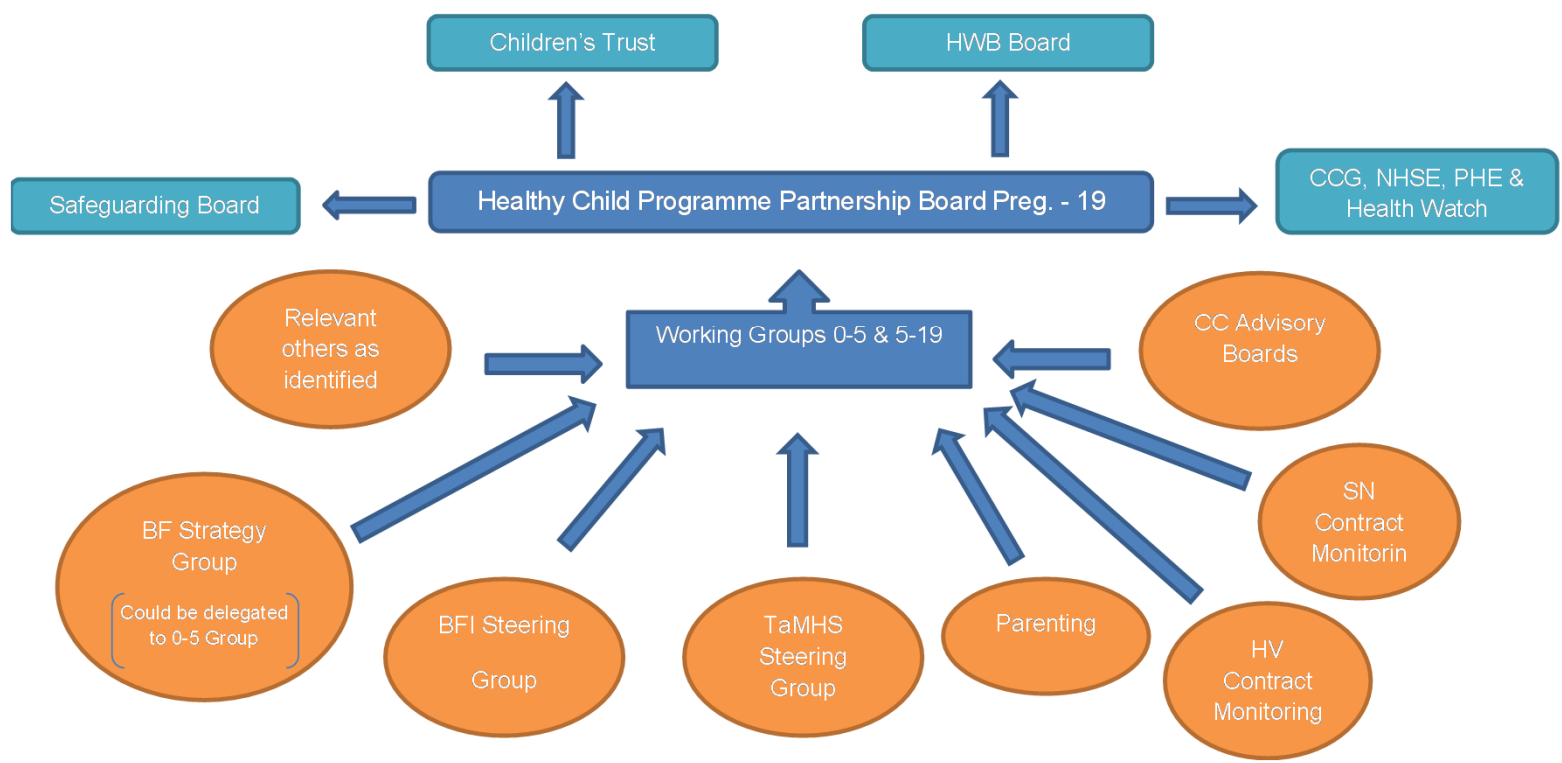
From 1 October this year, local authorities will take over responsibility from NHS England for planning and paying for public health services for babies and children up to 5 years old.

School nursing is already commissioned through the LA. These services include:

- health visiting
- the Family Nurse Partnership programme
- Public Health England commissioned a rapid review of new evidence to support this transition

Governance Structure

Accountability Structure:



HCP Public Health Commissioning

- Health Visiting Service
 - * Shropshire contract for universal provision for resident population
 - * Includes Family Nurse Partnership (FNP)
- Healthy Start – vitamin scheme
- School Nursing Service
 - * Shropshire contract for universal provision for school pupil population
- National Child Measurement Programme

HCP: expected outcomes

- **Improved quality of services**
(eg screening, immunisation, health assessments)
- **Improved experience of services**
(eg relevant, accessible, available, understood)
- **Improved health & wellbeing outcomes**
(eg relationships, physical activity, substance misuse, smoking, obesity)
- **Contribution to improved broader outcomes**
(eg academic achievement, participation, attendance, work/training)

Commissioning with Partners

- Children's Services colleagues
- Shropshire CCG colleagues
- Cross-border County opportunities

- Healthy Child Programme Partnership Board

Locality JSNA – Children’s data

	Childhood obesity (year 6) 2009/10-2013/14	Breastfeeding Initiation 2010/11 to 2014/15	Breastfeeding 10-14 days (2014-15)	Breastfeeding 6-8 weeks (2014-15)	Smoking in pregnancy 2010/11 to 2014/15	Population <5 years % (2013)	IMD 2010 (based on rank)	Rurality (based on rank) 2011
Albrighton	14.9%	80.7%	61.9%	47.0%	5.2%	3.8%	3	2
Bishop's Castle	16.2%	80.9%	67.5%	58.4%	8.1%	3.5%	1	1
Bridgnorth	16.2%	79.9%	62.5%	48.7%	8.5%	3.8%	3	2
Broseley	24.0%	71.8%	59.5%	39.2%	12.9%	4.9%	2	3
Church Stretton	10.5%	81.1%	63.0%	55.2%	10.4%	3.0%	3	1
Cleobury Mortimer	17.6%	87.3%	51.6%	41.9%	9.5%	3.6%	2	1
Craven Arms	24.3%	81.4%	62.6%	47.5%	15.3%	4.2%	1	1
Ellesmer	18.3%	74.8%	51.8%	41.9%	14.0%	4.2%	2	2
Highley	21.7%	64.1%	38.9%	28.7%	28.3%	4.8%	1	3
Ludlow	15.8%	74.8%	54.8%	41.3%	15.0%	4.4%	1	3
Market Drayton	19.5%	69.4%	48.0%	36.1%	19.6%	5.6%	2	2
Much Wenlock	13.7%	81.7%	77.6%	55.3%	9.7%	3.9%	3	2
Oswestry Total	19.9%	69.9%	51.0%	38.4%	18.9%	5.0%	2	2
North Oswestry	17.5%	69.3%	44.9%	40.6%	21.1%	4.9%	2	2
Oswestry Town	21.5%	66.9%	48.2%	33.0%	22.0%	5.1%	1	3
South & East Oswestry	19.8%	75.5%	59.9%	46.4%	13.4%	4.4%	2	1
Pontesbury and Minsterley	18.6%	81.8%	60.9%	48.9%	14.4%	5.0%	3	3
Shifnal	18.9%	79.5%	62.1%	51.2%	13.4%	4.8%	3	2
Shrewsbury Total	16.4%	75.0%	56.5%	45.0%	14.9%	5.3%	2	3
North East Shrewsbury	18.8%	66.1%	48.0%	33.5%	21.1%	6.6%	1	3
Shrewsbury rural	16.4%	79.7%	64.8%	53.6%	12.0%	4.8%	2	1
South Shrewsbury	14.3%	80.8%	65.1%	55.0%	11.4%	4.5%	3	3
West and Central Shrewsbury	14.4%	83.8%	65.9%	52.2%	7.9%	5.3%	3	3
Wem	21.3%	77.0%	58.3%	46.2%	12.6%	4.5%	2	1
Whitchurch	19.1%	69.6%	48.0%	37.3%	22.3%	4.6%	1	3
Shropshire	17.7%	75.2%	56.2%	43.5%	14.6%	4.8%		

Discussion Points

- What reporting mechanisms should be put in place for the Partnership Board?
- Is the strategic direction of joint commissioning an approach that the H&WB can endorse?

